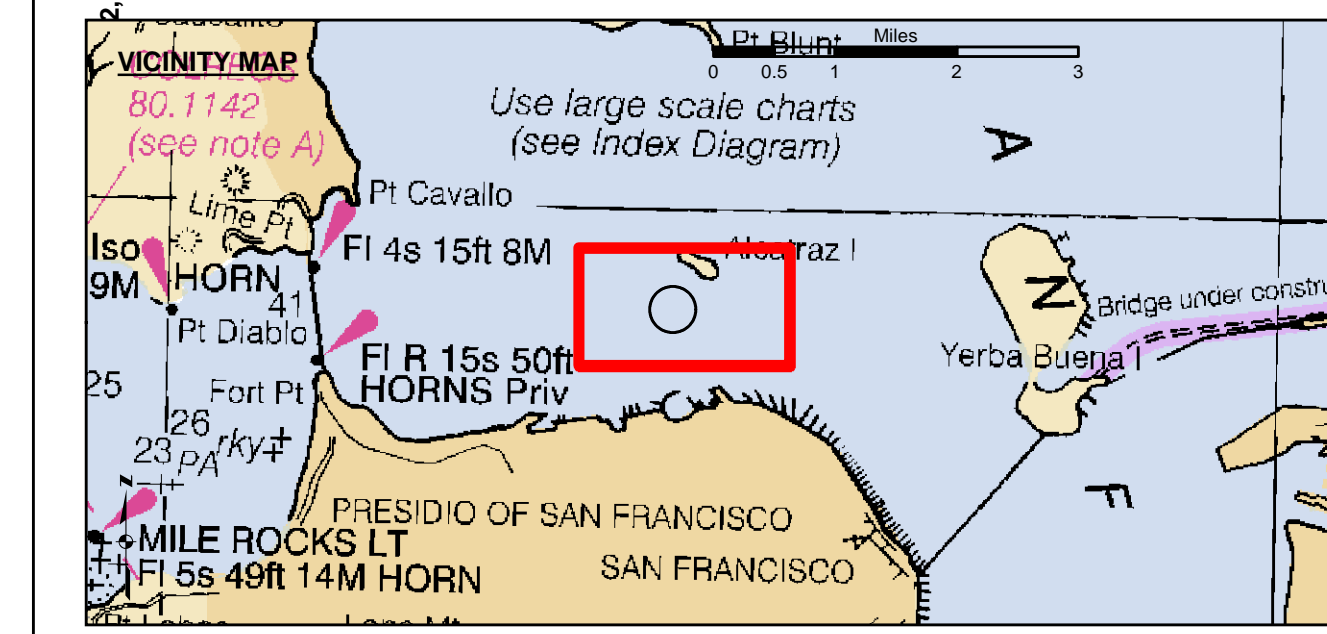
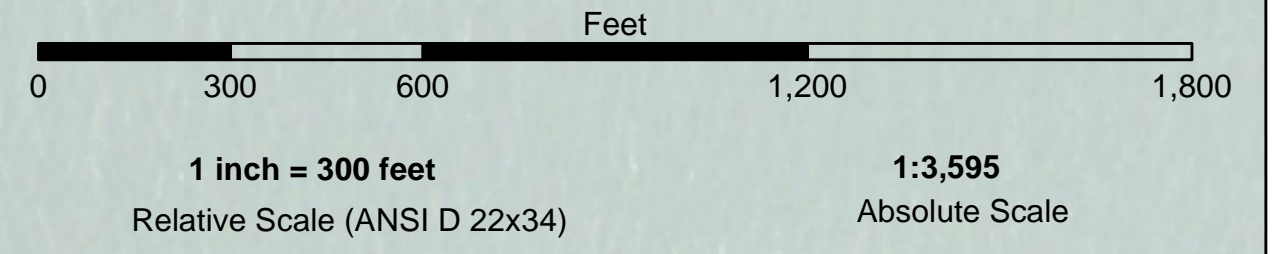


LAMBERT COORDINATES

POINT	X	Y
U.S.G.S. MON: 57	ELEV. - 14.00	6,005,367 2,123,290
TRANSAMERICA BUILDING	6,011,912	2,117,586
ALCATRAZ DISPOSAL SITE - (SF-11)	6,005,935	2,127,235
1,000 FT. RADIUS	6,005,935	2,127,235
ALCATRAZ LIGHT	6,008,552	2,129,010
ALCATRAZ BUDY	6,008,367	2,127,186



- Federal Navigation Channel
- Shoaling Area
- Placement Area
- Anchorage Area
- Wreck Area
- Submerged Wreck
- Zone III Angle Points
- Beacon, General
- Obstruction Point
- Navigation Buoy
- Navigation Buoy
- Shoalest Sounding*
- Contour Lines Every 10' -20' to -120'

NOTES:
 HORIZONTAL COORDINATE SYSTEM:
 NORTH AMERICAN DATUM OF 1983 (NAD83), PROJECTED TO THE STATE PLANE COORDINATE SYSTEM (SPCS), CALIFORNIA ZONE III. DISTANCE UNITS IN U.S. FEET.

VERTICAL DATUM:
 SOUNDINGS ARE SHOWN IN FEET AND INDICATE DEPTHS BELOW MEAN LOWER LOW WATER.

THE INFORMATION DEPICTED ON THIS MAP REPRESENTS THE RESULTS OF A SURVEY CONDUCTED ON THE DATE INDICATED AND CAN ONLY BE CONSIDERED TO REPRESENT THE GENERAL CONDITION EXISTING AT THAT TIME.

BASE MAPS ARE USDA NAIP 2010.

*SHOALEST SOUNDING PER QUARTER PER REACH

DRAWING NOT TO BE USED FOR NAVIGATION. ONLY CHANNEL CONDITION AT DATE OF SURVEY. THE LOCATION OF ALL NAVIGATION AIDS ARE BASED ON INFORMATION PROVIDED BY THE U.S. COAST GUARD. BUOY LOCATIONS REPRESENT THE POSITION OF THE SINKER ONLY. SOUNDINGS ARE BASED ON THE DATUM OF MEAN LOWER LOW WATER AT THE LOCALITY.

SOUNDINGS WERE TAKEN BY FATHOMETER AND ARE SHOWN TO THE NEAREST TENTH OF A FOOT. SOUNDINGS ARE BASED ON THE DATUM OF MEAN LOWER LOW WATER AT THE LOCALITY.

SURVEYED BY THE CORPS OF ENGINEERS.

THE PROJECT DEPTH IS -40 FEET AT MLLW.

PLANE GRID AND COORDINATES ARE BASED ON LAMBERT PROJECTION, NAD 83. ZONE III CALIFORNIA AS DESCRIBED IN SPECIAL PUBLICATION NO. 235, PUBLISHED BY THE NATIONAL OCEAN SURVEY.

HORIZONTAL GPS CONTROL:
 COAST GUARD D-BEACON

VERTICAL CONTROL:
 BENCHMARK: 180 1936
 PID: HT0702
 MLLW = 3.972m(13.03ft)

NOAA STATION 9414280
 TIDE GAUGE LOCATION: SAN FRANCISCO

US Army Corps of Engineers
 San Francisco District
 1455 Market Street
 San Francisco, CA 94103

DISCLAIMER
 The United States Government makes no warranty, representation, or implied endorsement of the accuracy, completeness, reliability, usability, or timeliness of any information provided by this system. The user is responsible for the results of any application of the data for other than its intended purpose.

Chart Date: May 09, 2018
Designed by: PTD
Plotted by: PTD
Checked by: PTD
Drawn by: PTD

PREPARED UNDER THE DIRECTION OF
 TRAVIS J. RAYFIELD
 LT COLONEL, C.E., DISTRICT ENGINEER

Submitted: Hydro Survey Team Leader
Recommended: Chief, Hydro Survey Section
Approved: Chief, Construction Branch

SAN PABLO BAY
ALCATRAZ DISPOSAL SITE-SF11
CONDITION SURVEY
07 MAY 2018

Sheet Reference Number 1 of 1